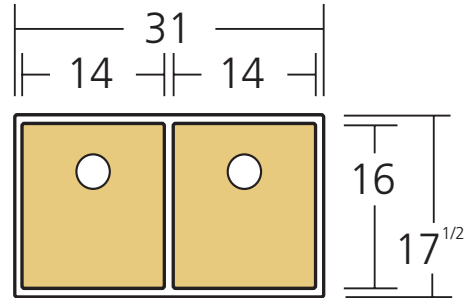


# Oliveri®

## Model: SB63CU



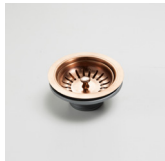
### FEATURES

- Versatile Installation**  
 Suitable for topmount, undermount or flushmount installation.
- Softtone® and sound proofing**  
 Ensures improved heat retention with a sound deadening finish.
- Easy clean corners**  
 Softly squared 5mm radius corners are hygienic and easy to clean.
- Stainless steel basin protectors**  
 The matching basin protector creates a barrier between dishes and the unique bowl finish.
- Rear Waste Outlets**  
 Colored to match your sink the outlets allow maximum space in the cupboards below.

### INCLUDED ACCESSORIES



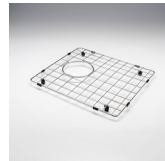
**ACBWCU** Copper  
Basket waste



**ACBWCU** Copper  
Basket waste



**ACP104F**  
Bamboo board



**ACBPCU-2** Copper  
Basin protector



**ACBPCU-2** Copper  
Basin protector

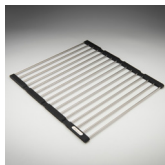


**ACP109CU** Copper  
Bench top drainer tray

### MATCHING ACCESSORIES



**ACP136**  
Colander



**ACP105**  
Foldamate

### SPECIFICATIONS

#### Description

Spectra Double Basin Copper Sink

#### Sink Size

31"W x 17<sup>1/2</sup>"H

#### Main Basin

14"W x 16"H x 8"D / 7.6 Gallons

#### Main Basin

14"W x 16"H x 8"D / 7.6 Gallons

#### Construction

Fabricated with 5mm radius corners, Softtone® and soundproofing

#### Material

304 grade, 18/10 coloured stainless steel (18 gauge)

#### Installation

Topmount, undermount or flushmount

#### Fixings

Adjustable clips and sealing foam supplied

#### Cut out template

Refer to oliverisinks.com

#### Min cabinet size

36"

#### Tap holes

N/A

#### Waste fittings

2 x basket wastes included

#### Overflow

N/A

#### Carton size

34" x 21" x 13"

#### Weight

41lbs

#### Warranty

Lifetime manufacturer's warranty (refer to oliverisinks.com)



For more information visit [oliverisinks.com](http://oliverisinks.com)